

# 1830 EX



[www.ommelift.com](http://www.ommelift.com)

## Trailer lift - Articulated

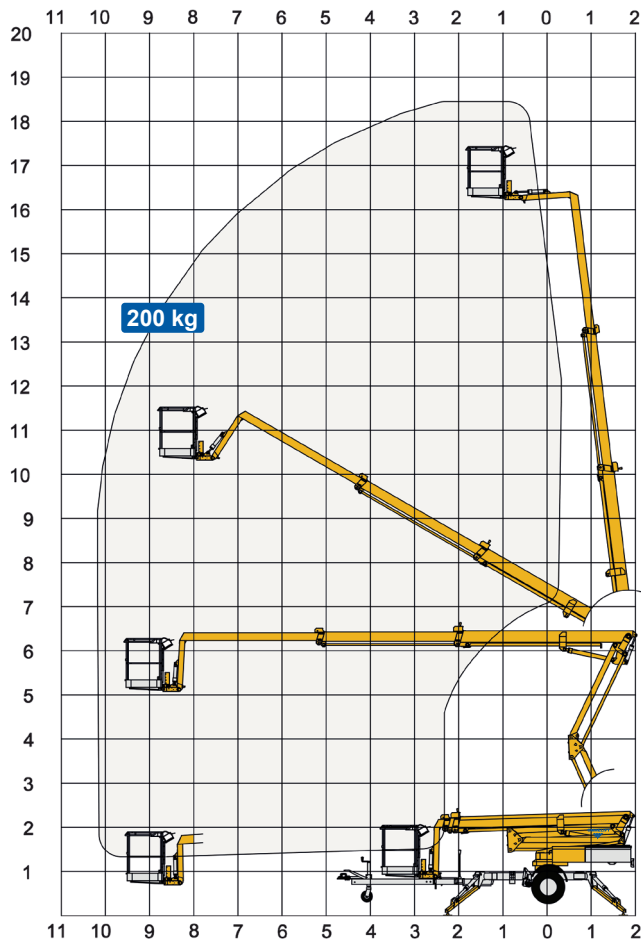
Dealer:

# OMMELIFT



**Built to last** - *ask our users!*

# 1830 EX Trailer lift



Technical Data:	1830 EX	1830 EXB
Max. working height	18.3 m	
Max. platform height	16.3 m	
Max. outreach	10.2 m	
Up and over clearance	6.0 m	
Angle boom length (boom + basket)	2.0 m	
Jib length (jib + basket)	-	
Vertical jib rotation	-	
Turret rotation	± 355°	
Basket rotation	± 41°	
Max. basket load	200 kg	
Basket size	1.25 x 0.8 x 1.1 m	
Stabilizer pad size	ø200 mm	
	<sup>5</sup> Petrol <sup>6</sup> Diesel	<b>BATTERY</b>
Engine	<b>230V / 16A</b>	<sup>5</sup> Optional <sup>6</sup>
Fuel tank capacity	<sup>5</sup> Optional <sup>6</sup>	<sup>5</sup> Optional <sup>6</sup>
Generator		
Battery pack		24V/200Ah/5h
Charger		24 V / 30 A
Double charger system		Optional
Elec. descent	Optional	Optional
<a href="http://www.ommelift.com">See www.ommelift.com for more features and options</a>		
Self-propulsion with hydraulic engagement of traction rollers	Standard	
Gradeability	14% / 8°	
Ground to tire clearance at max. set-up	Min. 250 mm (8.8% / 5.0°)	
Total weight	2450 kg	2550 kg
Ground pressure, outrigger pad	15.9 kg/cm <sup>2</sup>	15.9 kg/cm <sup>2</sup>
Ground pressure with 0.4 x 0.4 m spreader plate	0.9 kg/cm <sup>2</sup>	0.9 kg/cm <sup>2</sup>
Max. force, outrigger	13.5 kN	13.5 kN
Hydraulic stabilizers	Standard	
Controls	Proportional	
Flush basket mount	Standard	
Elec. power outlet in basket	Standard	
Tool trays in basket	Standard	

