

EC520AJ Gen.2

ELECTRIC ARTICULATING

BOOM LIFT



STANDARD SPECIFICATIONS

Performance

Working Height	18.0 m
Platform Height	16.0 m
Horizontal Outreach	10.00 m
Working Outreach **	10.65 m
Up and Over Height	7.30 m
Swing Non-Continuous	355°
Platform Capacity - Unrestricted	250 kg
Platform Rotator (Hydraulic)	180°
Jib - Overall Length	1.24 m
Jib - Range of articulation	145° (+76° / -69°)
Machine weight *	7,760 kg
Maximum Ground Bearing Pressure ***	6.6 kg/cm ²
Occupied floor area	7.5 m ²
Drive Speed	5 km/h
Gradeability- 2WD	30%
Turning Radius - Inside	2.06 m
Turning Radius - Outside	4.78 m

* Certain options or country standards may increase weight and/or dimensions.

** Incl. 0.65 m outreach beyond platform

*** With Standard tires

KEY SPECS

Working Height

18.00 m

Platform Capacity

250 kg

Horizontal Outreach

10.00 m

Drive Speed

5 km/h

KEY FEATURES

- Electric motor and battery technology for zero emissions and low noise
- Conquer rough terrain with standard oscillating axle delivering optimized grip and stability
- Save time thanks to very fast charging (~3.5 hrs- depends on battery stack size)
- Reduce maintenance with Dura Tough gull-wing turntable hood and chassis embedded lithium batteries for optimal component protection
- Zero emissions allowing you to work in low emission zones- indoor and outdoor

ACCESSORIES & OPTIONS

- Lithium Battery extension up to 20KW/400Ah total
- Arctic Hydraulic Oil
- 33 x 12-20 Low profile, Solid Non Marking Tyres
- 4 Wheel Drive System
- Flashing Amber Beacon
- ClearSky CAN Telematics System
- 0.76 m x 1.22 m Slide bar side entry platform
- Platform Worklights
- Hydraulic Oil Heater
- 0.76 m x 1.52 m Self closing inward swing gate
- Head & Tail Lights
- Hot weather package
- 13 mm air line to platform
- Skyguard beacon (ILOS)
- Hostile Environment Kit **
- Platform Tool Tray
- All motion alarm (white noise)
- Ambient Light for Platform and Ground Controls (coming soon)
- Platform charger 12V
- Euro Plug & Socket
- SkyEye
- Platform charger USB
- Special paint colour
- SkyBar
- Biodegradable Hydraulic Oil
- Foam filled 315/55 D20 Tyres

Power Source

Control System	12V-DC
Power System	48V-DC
Batteries	10KW/200Ah Lithium-Ion Batteries including BMS and integrated heaters
Drive Motors	2 x AC Motors (4 AC motors with 4WD Option)

Tires

Non Marking	FF 315/55 D20
-------------	---------------

Hydraulic System

Hydraulic Reservoir Pump	30 L
--------------------------	------

STANDARD FEATURES

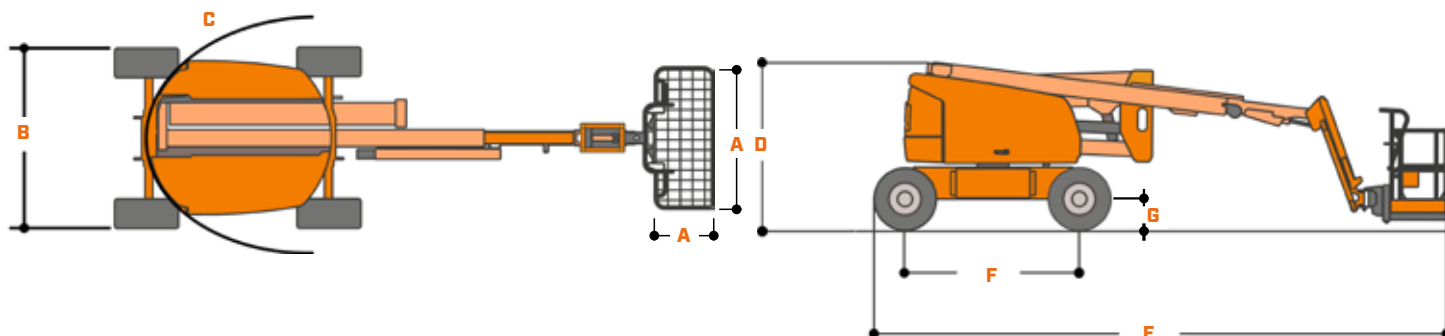
- Multiple function operation through Load Sensing System
- AC power cable to platform
- Horn
- Full proportional drive joystick control with integral thumb steer switch
- 5 Degree Tilt Alarm/Indicator Light
- Lifting/Tie Down Lugs
- Full proportional main boom and swing joystick control
- Dura Tough gull-wing turntable hood
- Oscillating Front Axle
- Selectable creep speed on drive / lift and swing functions
- 12V-DC Auxiliary Power
- Cast Aluminum Control Box
- Platform console machine status light panel *
- Hourmeter
- Motion Alarm
- 2 wheel independent direct electric AC drive
- Interactive 4" LCD Display at Ground Controls
- 3kW Zivan battery charger
- Control ADE® (Advanced Design Electronics) System
- Ground control selector switch with key lock
- 48V DC pump motor
- SkyLine

* Provides indicator lights at platform control console for system distress, battery state of charge, 5 degree tilt light, and foot switch status.

** Includes boom wipers, cylinder bellows and console cover.

DIMENSIONS

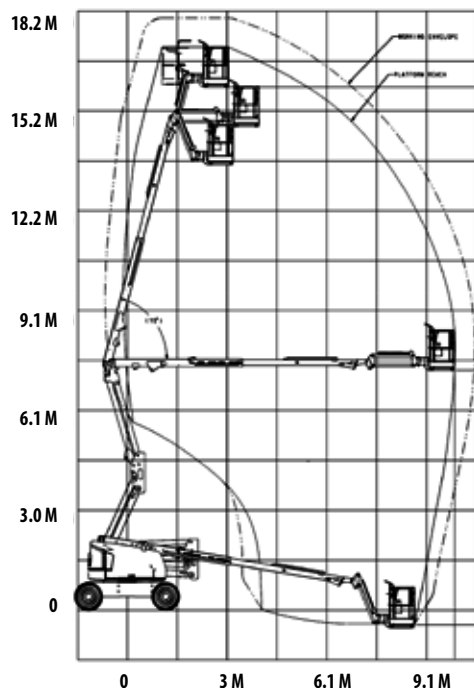
All dimensions are approximate



A. Platform Size	0.76 m x 1.83 m
B. Overall Width	2.26 m
C. Tailswing (working condition)	Zero

D. Stowed Height	2.27 m
E. Stowed Length	7.77 m
F. Wheelbase	2.36 m
G. Ground Clearance	0.42 m

REACH DIAGRAM



IMPORTANT

JLG is continually researching and developing products and reserves the right to make modifications without prior notice. All data in this document is indicative. Certain options or country standards will increase weight. Specifications may change to meet country standards or with the addition of optional equipment.

Due to continuous product improvements, JLG Industries reserves the right to make specification and/or equipment changes without prior notification.



JLG EMEA BV
 Polaris Avenue 63
 2132 JH Hoofddorp
 The Netherlands
 Tel.: +31 (0)23 565 5665
www.jlg.com

An Oshkosh Corporation Company